



**Work supervision on assembling of thermal and mechanical
equipment and pipelines of combined cycle gas turbine
block-230 MW at Izhevskaya CHP-1**



During the period from September 2012 to April 2014 our company supervised works on assembling of thermal and mechanical equipment and pipelines of combined cycle gas turbine block-230 MW at Izhevskaya CHP-1.



Construction works

Works were carried out without engaging the contractors, average amount of staff was 75-80 people, at peak of works – 230 people. Works were carried out in three shifts.



Beginning of boiler-utilizer gas flue steel structures assembling

Assembling of boiler-utilizer steel structures



During work more than a thousand tons of pipelines were assembled and more than a hundred units of equipment installed.



Foundation of gas turbine



Assembling of cooling tower

Project executive: Adamovich Gennadie

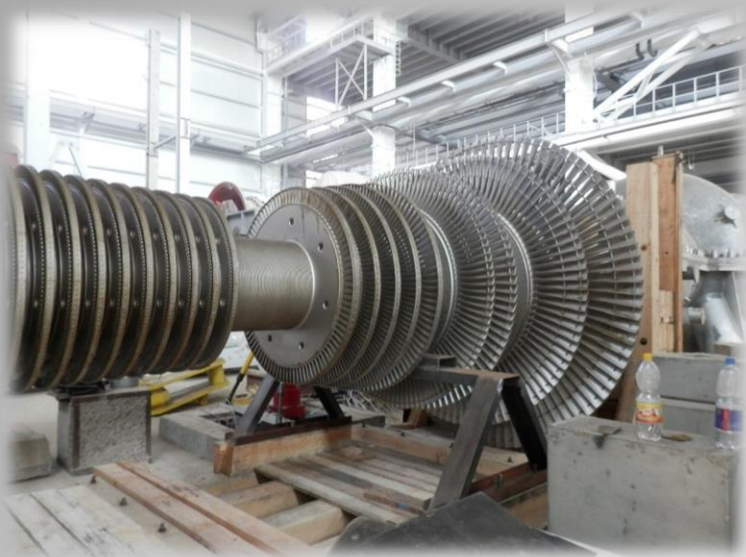
Production and Technical Department Engineer: Dolganov Vladimir



Assembling of main building steel structures

Assembling of flue and boiler-utilizer





Gas turbine

General view of generator hall

